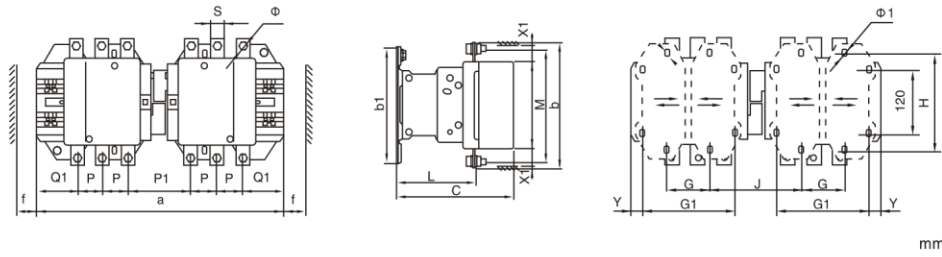


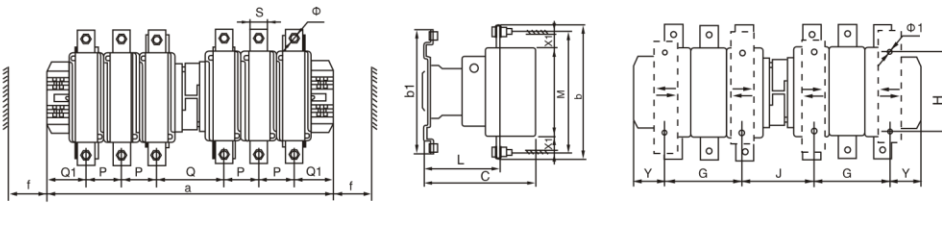
3P Ürün Boyutu



	a	P	P1	Q1	S	Φ	f	b	b1	M	c	L	G	G1	J	H	Φ1	Y	X1	
																			500V ≤	>500V
400	445	48	105	74	25	M10	151	206	209	181	219	145	80	170	156	170-180	8.5	19.5	15	20
4004	541	48	105	74	25	M10	151	206	209	181	219	145	80	170	156	170-180	8.5	67.5	15	20
500	485	55	111	77	30	M10	169	238	209	208	232	146	80	170	156	170-180	8.5	39.5	15	20
5004	595	55	111	77	30	M10	169	238	209	208	232	146	140	230	156	170-180	8.5	34.5	15	20

f: the smallest distance needed by taking out coil X1: electric arc's distance
During supplying product, the interlock contactor is installed onto fixed-strip.

3P Ürün Boyutu



	a	P	P1	Q1	S	Φ	f	b	b1	M	c	L	G	J	H	Φ1	Y	X1	
																		500V ≤	>500V
630	636	80	138	89	40	M12	201	304	280	264	255	155	180(100-195)	139	180-190	10.5	68.5	20	30
6304	796	80	138	89	40	M12	201	304	280	264	255	155	240(150-275)	139	180-190	10.5	68.5	20	30
800	636	80	138	89	40	M12	201	304	280	264	255	155	180(100-195)	139	180-190	10.5	68.5	20	30

f: the smallest distance needed by taking out coil X1: electric arc's distance



XMC SERİSİ 3P/4P AC KONTAKTÖRLER
Kurulum ve Kullanım Talimatı
The Instruction of Installation And Use

Kullanım Alanı

XMC AC kontaktör (Aşağıdakiler kontaktör olarak adlandırılır) 50Hz veya 60Hz'de kullanılır, özel bobin tahsis edilmiş ise 40-400Hz devrede kullanılabilen, 660V'a kadar voltaj, 630A'dan az akım ve ana devreyi takmak ve kesmek ve ayrıca motoru sık sık çalıştırmak ve kontrol etmek için kullanılır. Her türlü elektrik ekipmanı, motor ve devrenin kontrolünde kullanılabilen her türlü röle gibi genel elektrik ekipmanlarını birleştirir. Yardımcı kontak grubu, hava zaman gecikmesi, mekanik kilit kontaktörüne ihtiyaç duyar ve ayrıca mekanik kilit kontaktöründen ve yıldız üçgeninden, termik röleyi başlatılabilir ve manyetik yol vericiden olabilir.

Yapılandırma Özelliği

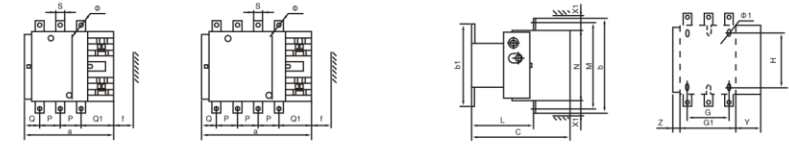
İnce ve kompakt yapı, fonksiyon kalıplama ve kordon açığı montajı stereoskopik düzeni ile kontaktör koruyucu tiptri, etki mekanizması doğrusal hareket tipidir, temas çift kırılma noktasıdır. Mekanik kilitleme kontaktöründen (tersine çevrilebilir vites kontaktörü) iki kontaktör arasında mekanik kilit organizasyonu ekleyin.

Üretici/İthalatçı

Orhangazi Mah. 1656 Sk. No:19 34538
Esenyurt/İSTANBUL
www.xoren.com.tr

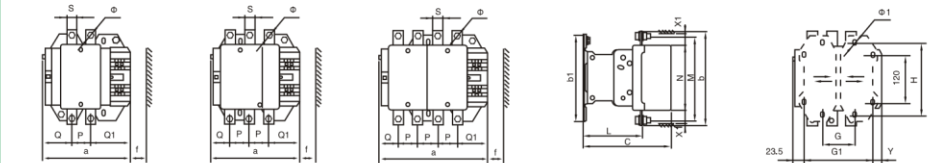


4P Ürün Boyutu



	a	P	Q	Q1	S	Φ	f	b	b1	M	N	c	L	G	H	Φ1	G1	Z	Y	X1	
																				500V ≤	>500V
115	163.5	37	29.5	60	20	M6	131	162	137	147	124	171	107	80	120-106	6.5	106	13.5	44	10	15
1154	200.5	37	29.5	60	20	M6	131	162	137	147	124	171	107	80	120-106	6.5	143	13.5	44	10	15
150	163.5	40	26	57.5	20	M8	131	170	137	150	124	171	107	80	120-106	6.5	106	13.5	44	10	15
1504	200.5	40	25	55.5	20	M8	131	170	137	150	124	171	107	80	120-106	6.5	143	13.5	44	10	15
185	168.5	40	29	59.5	20	M8	130	174	137	154	127	181	113.5	80	120-106	6.5	111	13.5	44	10	15
1854	208.5	40	29	59.5	20	M8	130	174	137	154	127	181	113.5	80	120-106	6.5	151	13.5	44	10	15
225	168.5	48	21	51.5	25	M10	130	197	137	172	127	181	113.5	80	120-106	6.5	111	13.5	44	10	15
2254	208.5	48	17	47.5	25	M10	130	197	137	172	127	181	113.5	80	120-106	6.5	151	20.5	44	10	15
265	201.5	48	39	66.5	25	M10	147	203	145	178	147	213	141	96	120-106	6.5	140	20.5	38	10	15
2654	244.5	48	34	66.5	25	M10	147	203	145	178	147	213	141	96	120-106	6.5	186	20.5	38	10	15
330	213	48	43	74	25	M10	147	206	145	181	158	219	145	96	120-106	6.5	154.5	20.5	38	10	15
3304	261	48	43	74	25	M10	147	206	145	181	158	219	145	96	120-106	6.5	202.5	20.5	38	10	15

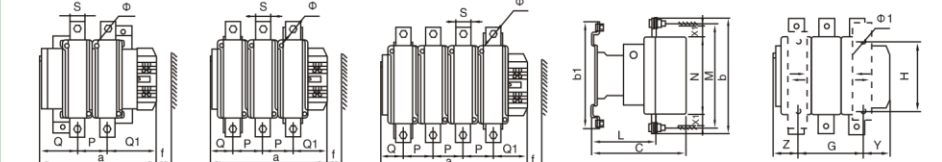
400-500 Ürün Boyutu



	a	P	Q	Q1	S	Φ	f	b	b1	M	N	c	L	G	G1	Φ1	H	Y	X1	
																			500V ≤	>500V
4002	213	48	69	96	25	M10	151	206	209	181	158	219	145	80(66-102)	170(156-192)	8.5	180	19.5	15	20
400	213	48	43	74	25	M10	151	206	209	181	158	219	145	80(66-102)	170(156-192)	8.5	180	19.5	15	20
4004	261	48	43	74	25	M10	151	206	209	181	158	219	145	80(66-150)	170(156-240)	8.5	180	67.5	15	20
5002	233	55	76	102	30	M10	169	238	209	208	172	232	146	80(66-120)	170(156-210)	8.5	180	39.5	15	20
500	233	55	46	77	30	M10	169	238	209	208	172	232	146	80(66-120)	170(156-210)	8.5	180	39.5	15	20
5004	288	55	46	77	30	M10	169	238	209	208	172	232	146	140(66-175)	230(156-265)	8.5	180	34.5	15	20

f: the smallest distance needed by taking out coil X1: electric arc's distance

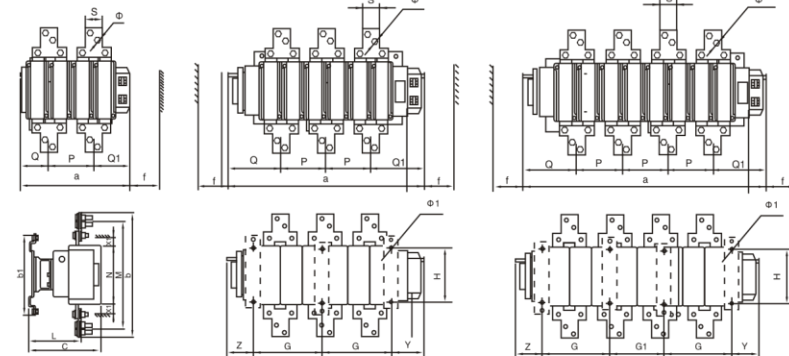
630, 800 Ürün Boyutu



	a	P	Q	Q1	S	Φ	f	b	b1	M	N	c	L	G	H	Φ1	Z	Y	X1	
																			500V ≤	>500V
6302	309	80	102	127	40	M12	201	304	280	264	202	255	155	180(100-195)	180	10.5	60.5	68.5	20	30
620	309	80	60	89	40	M12	201	304	280	264	202	255	155	180(100-195)	180	10.5	60.5	68.5	20	30
6304	389	80	60	89	40	M12	201	304	280	264	202	255	155	240(150-275)	180	10.5	60.5	68.5	20	30
800	309	80	60	89	40	M12	201	304	280	264	202	255	155	180(100-195)	180	10.5	60.5	68.5	20	30

f: the smallest distance needed by taking out coil X1: electric arc's distance

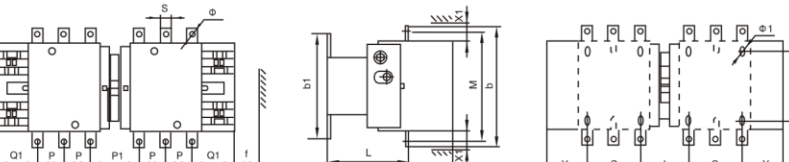
Ürün Boyutu



	a	P	Q	Q1	S	Φ	f	b	b1	M	N	c	L	G	G1	Φ1	H	Z	Y	X1	
																				500V ≤	>500V
7802	389	160	100	129	60	M12	201	435	280	400-348	202	255	165	240	-	10.5	180	60.5	88.5	20	30
780	704	160	192	192	60	M12	201	435	280	400-348	202	255	165	240	-	10.5	180	91	133	20	30
7804	864	160	192	192	60	M12	201	435	280	400-348	202	255	165	240	190	10.5	180	91	103	20	30

f: the smallest distance needed by taking out coil X1: electric arc's distance

115-330 Ürün Boyutu



	a	P	P1	Q1	S	Φ	f	b	b1	M	c	L	G	J	H	Φ1	Y	X1		
																		500V ≤	>500V	
115	346	37	78	60	15	M6	109	162	137	147	124	171	107	80	120-106	6.5	57	10	15	
1154	420	37	78	60	15	M6	109	162	137	147	124	171	107	80	109	120-106	6.5	75.5	10	15
150	346	40	72	57.5	20	M8	109	170	137	150	124	171	107	80	72	120-106	6.5	57	10	15
1504	420	40	72	55.5	20	M8	109	170	137	150	124	171	107	80	109	120-106	6.5	75.5	10	15
185	357	40	78	59.5	20	M8	117	174	137	154	127	181	113.5	80	78	120-106	6.5	59.5	10	15
1854	437	40	78	59.5	20	M8	117	174	137	154	127	181	113.5	80	118	120-106	6.5	79.5	10	15
225	357	48	62	51.5	25	M10	117	197	137	172	127	181	113.5	80	78	120-106	6.5	59.5	10	15
2254	437	48	54	47.5	25	M10	117	197	137	172	127	181	113.5	80	118	120-106	6.5	79.5	10	15
265	424	48	99	66.5	25	M10	143	203	145	178	147	213	141	96	109	120-106	6.5	61.5	10	15
2654	520	48	99	66.5	25	M10	143	203	145	178	147	213	141	96	157	120-106	6.5	85.5	10	15
330	445	48	105	74	25	M10	143	206	145	181	158	219	145	96	122	120-				